

**TASTY**  
**GOODNESS**  
**IN**  
**BRAND**  
**NEW**  
**LOOK**



🏠 301 3rd floor, Jhalawar, Patanwala Industrial Estate, Opposite Shreyas Cinema,  
L.B.S. Marg, Ghatkopar West, Mumbai, Maharashtra - 400086  
✉ support@alfarms.com  
☎ +91-22-49711543



SINCE - 1997

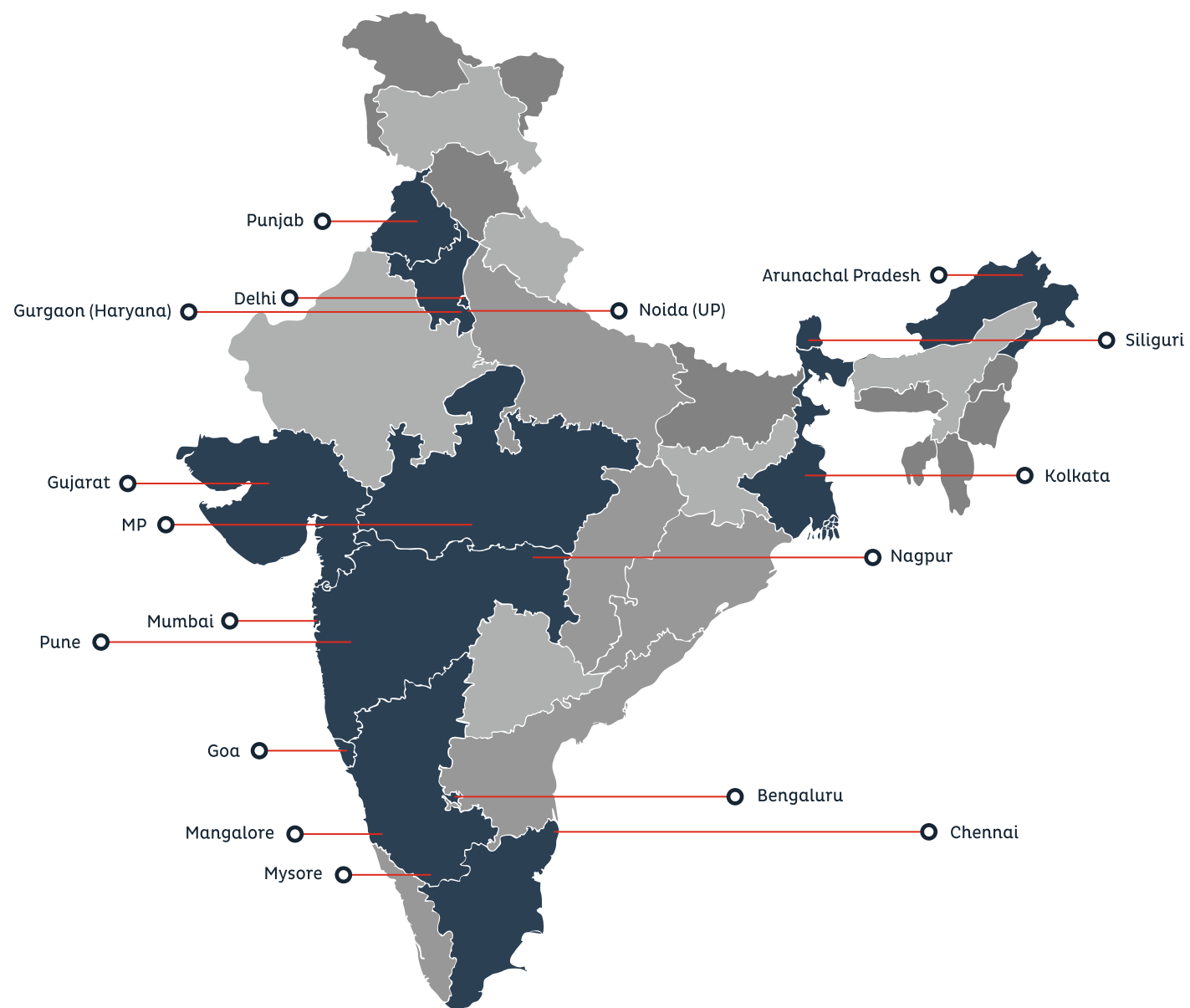
# Good Food – Good Life

We strongly believe that healthy food is not synonymous with bland and boring food, which is why **we create high-end gourmet products for our health-conscious customers**. Only the freshest ingredients and most high-quality meats are used to create these premium products, in order to give you an unparalleled experience. A beautiful melange of flavours is created using the right balance of spices and seasoning to add a delicious twist to these lean, nutritious, healthy meats. We ensure that each portion is processed, preserved and packaged in a manner that it retains all its freshness till the moment you open the pack, at **our state-of-the-art processing plant** in Western Maharashtra.

Currently, we supply to caterers, butchers, delicatessens, food service companies and **over 500 retailers in West and South India**. In conjunction with our ingenious and innovative Master Chef, we work towards creating delicious new recipes, **keeping in mind our wide range of consumers and their varied tastes**.

All our pork is a produce of the Yorkshire and Landrace breeds, without exception. This ensures that the pork you consume is of the most superior standard. **Our sausages are butcher's style sausages which lend the texture, taste, appearance and succulence that one would get from handmade batches of sausages, while being produced using the latest technology of German equipment.**

Try our **Alf-farms** meats and we assure you that nothing will taste better. That is, after all, our secret. We believe that once you take a bite of our luscious meats, you become part of our ever-growing family. Our promise is to constantly innovate, and stay ahead of our competition in all aspects, **giving you the divine experience that you deserve**.



# Index

1	<b>Chicken Sausages</b> .....	1
2	<b>Chicken Salami</b> .....	4
3	<b>Chicken Kebab &amp; Tikka</b> .....	7
4	<b>Turkey Salami &amp; Ham</b> .....	8
5	<b>Pork Sausages</b> .....	9
6	<b>Pork Salami</b> .....	11

### Chicken Frank Sausages Smoked Golden Brown



101mm x 21 mm

250 gms / 500gms

173mm x 198 mm

**Ingredients:** Chicken Meat (63%), Water, Edible vegetable oil-Refined Palm Oil, Cereal Binder - Semolina (5%) and Modified Starch (4%), Mixed Spices (3.1%), Iodized Salt, Preservative-Sodium Nitrite (E250), Acidity regulator-Sodium polyphosphate (E452(i)), Anti Oxidant-Sodium Erythroate (E316), Permitted colour Caramel III - ammonia caramel (E150 c)

Nutritional Information Per 100 g\*

ENERGY	PROTEIN	FAT	TOTAL CARBO.	SUGAR
212.16 Kcal	13.6 g	13.32 g	10.1 g	2.18 g

\*approximate Values

### Chicken & Cheese Paprika Sausages

101mm x 21 mm  
250 gms / 500gms  
173mm x 198 mm



**Ingredients:** Chicken Meat (63%), Water, Edible vegetable oil-Refined Palm Oil, Cereal Binder - Semolina (5%) and Modified Starch (4%), Mixed Spices (3.1%), Iodized Salt, Preservative-Sodium Nitrite (E250), Acidity regulator-Sodium polyphosphate (E452(i)), Anti Oxidant-Sodium Erythroate (E316)

Nutritional Information Per 100 g\*

ENERGY	PROTEIN	FAT	TOTAL CARBO.	SUGAR
224 Kcal	11.7 g	17.2 g	5.5 g	<0.1 g

\*approximate Values

incomplete



### Chicken Hot Dog Sausages



101mm x 21 mm  
250 gms / 500gms  
173mm x 198 mm

**Ingredients:** Chicken Meat (63%), Water, Edible vegetable oil-Refined Palm Oil, Cereal Binder - Semolina (5%) and Modified Starch (4%), Mixed Spices (3.1%), Iodized Salt, Preservative-Sodium Nitrite (E250), Acidity regulator-Sodium polyphosphate (E452(i)), Anti Oxidant-Sodium Erythroate (E316)

Nutritional Information Per 100 g\*

ENERGY	PROTEIN	FAT	TOTAL CARBO.	SUGAR
197.36 Kcal	11.47 g	13.6 g	17.27 g	1.96 g

\*approximate Values

### Chicken Smoked Sausages

101mm x 21 mm  
250 gms / 500gms  
173mm x 198 mm



**Ingredients:** Chicken Meat (63%), Water, Edible vegetable oil-Refined Palm Oil, Cereal Binder - Semolina (5%) and Modified Starch (4%), Mixed Spices (3.1%), Iodized Salt, Preservative-Sodium Nitrite (E250), Acidity regulator-Sodium polyphosphate (E452(i)), Anti Oxidant-Sodium Erythroate (E316)

Nutritional Information Per 100 g\*

ENERGY	PROTEIN	FAT	TOTAL CARBO.	SUGAR
202 Kcal	11.7 g	14.3 g	6.6 g	<0.1 g

\*approximate Values

incomplete



### Chicken Tandoori Cocktail Sausages



101mm x 21 mm  
250 gms / 500gms  
173mm x 198 mm

**Ingredients:** Chicken Meat (63%), Water, Edible vegetable oil-Refined Palm Oil, Cereal Binder - Semolina (5%) and Modified Starch (4%), Mixed Spices (3.1%), Iodized Salt, Preservative-Sodium Nitrite (E250), Acidity regulator-Sodium polyphosphate (E452(i)), Anti Oxidant-Sodium Erythroate (E316)

Nutritional Information Per 100 g\*

ENERGY	PROTEIN	FAT	TOTAL CARBO.	SUGAR
193.92 Kcal	11.36 g	13.56 g	6.61 g	<0.1 g

\*approximate Values




# Chicken

## Sausages



### Chicken Plain Cocktail Sausages



-  101mm x 21 mm
-  250 gms / 500gms
-  173mm x 198 mm




**Ingredients:** Chicken Meat (63%), Water, Edible vegetable oil-Refined Palm Oil, Cereal Binder - Semolina (5%) and Modified Starch (4%), Mixed Spices (3.1%), Iodized Salt, Preservative-Sodium Nitrite(E250),Acidity regulator-Sodium polyphosphate(E452(i)),Anti Oxidant-Sodium Erythroate(E316)

**Nutritional Information Per 100 g\***

ENERGY	PROTEIN	FAT	TOTAL CARBO.	SUGAR
202.5 Kcal	12.07 g	14.42 g	6.11 g	<0.1 g

\*approximate Values

### Chicken Frankfurters Sausages

- 101mm x 21 mm 
- 250 gms / 500gms 
- 173mm x 198 mm 

**Ingredients:** Chicken Meat (63%), Water, Edible vegetable oil-Refined Palm Oil, Cereal Binder - Semolina (5%) and Modified Starch (4%), Mixed Spices (3.1%), Iodized Salt, Preservative-Sodium Nitrite(E250),Acidity regulator-Sodium polyphosphate(E452(i)),Anti Oxidant-Sodium Erythroate(E316)






**Nutritional Information Per 100 g\***

ENERGY	PROTEIN	FAT	TOTAL CARBO.	SUGAR
164 Kcal	20.9 g	7.1 g	4.2 g	<0.1 g

\*approximate Values

### Ghost Chilli Chicken Sausages



-  101mm x 21 mm
-  250 gms / 500gms
-  173mm x 198 mm

**Ingredients:** Chicken Meat(63%), Water, Edible vegetable oil-Refined Palm Oil, Cereal Binder - Semolina (5%) and Modified Starch (4%), Mixed Spices (3.1%), Iodized Salt, Preservative-Sodium Nitrite(E250),Acidity regulator-Sodium polyphosphate(E452(i)),Anti Oxidant-Sodium Erythroate(E316), Permitted colour Caramel III - ammonia caramel (E150 c)

**Nutritional Information Per 100 g\***

ENERGY	PROTEIN	FAT	TOTAL CARBO.	SUGAR
186.81 Kcal	13.55 g	11.89 g	6.4 g	<0.1 g

\*approximate Values

# Chicken

## Salami

### Chicken Chilly Salami



-  101mm x 21 mm
-  250 gms / 500gms
-  173mm x 198 mm

**Ingredients:** Chicken Meat (63%), Water, Edible vegetable oil-Refined Palm Oil, Cereal Binder - Semolina (5%) and Modified Starch (4%), Mixed Spices (3.1%), Iodized Salt, Preservative-Sodium Nitrite(E250),Acidity regulator-Sodium polyphosphate(E452(i)),Anti Oxidant-Sodium Erythroate(E316)




**Nutritional Information Per 100 g\***

ENERGY	PROTEIN	FAT	TOTAL CARBO.	SUGAR
199.34 Kcal	10.86 g	13.98 g	7.52 g	2.01 g

\*approximate Values

### Chicken Copatta Salami Authentic Smoked Salami



- 101mm x 21 mm 
- 250 gms / 500gms 
- 173mm x 198 mm 

**Ingredients:** Chicken Meat (63%), Water, Edible vegetable oil-Refined Palm Oil, Cereal Binder - Semolina (5%) and Modified Starch (4%), Mixed Spices (3.1%), Iodized Salt, Preservative-Sodium Nitrite(E250),Acidity regulator-Sodium polyphosphate(E452(i)),Anti Oxidant-Sodium Erythroate(E316)

**Nutritional Information Per 100 g\***

ENERGY	PROTEIN	FAT	TOTAL CARBO.	SUGAR
215.68 Kcal	12.48 g	14.44 g	8.95 g	<0.1 g

\*approximate Values



### Chicken N Cheese Salami



- 101mm x 21 mm
- 250 gms / 500gms
- 173mm x 198 mm

**Ingredients:** Chicken Meat (63%), Water, Edible vegetable oil-Refined Palm Oil, Cereal Binder - Semolina (5%) and Modified Starch (4%), Mixed Spices (3.1%), Iodized Salt, Preservative - Sodium Nitrite(E250),Acidity regulator-Sodium polyphosphate(E452(i)),Anti Oxidant-Sodium Erythroate(E316)

**Nutritional Information Per 100 g\***

ENERGY	PROTEIN	FAT	TOTAL CARBO.	SUGAR
195.01 Kcal	12.57 g	13.25 g	6.37 g	<0.1 g

\*approximate Values



### Chicken Ham



- 101mm x 21 mm
- 250 gms / 500gms
- 173mm x 198 mm

**Ingredients:** Chicken Meat (82%), Water, Edible vegetable oil-Refined Palm Oil, Cereal Binder - Semolina (5%) and Modified Starch (4%), Mixed Spices (3.1%), Iodized Salt, Preservative - Sodium Nitrite(E250),Acidity regulator-Sodium polyphosphate(E452(i)),Anti Oxidant-Sodium Erythroate(E316)

**Nutritional Information Per 100 g\***

ENERGY	PROTEIN	FAT	TOTAL CARBO.	SUGAR
91.25 Kcal	19.83 g	0.61 g	1.61 g	<0.1 g

\*approximate Values

### Chicken Plain Salami

- 101mm x 21 mm
- 250 gms / 500gms
- 173mm x 198 mm

**Ingredients:** Chicken Meat (63%), Water, Edible vegetable oil-Refined Palm Oil, Cereal Binder - Semolina (5%) and Modified Starch (4%), Mixed Spices (3.1%), Iodized Salt, Preservative - Sodium Nitrite(E250),Acidity regulator-Sodium polyphosphate(E452(i)),Anti Oxidant-Sodium Erythroate(E316)

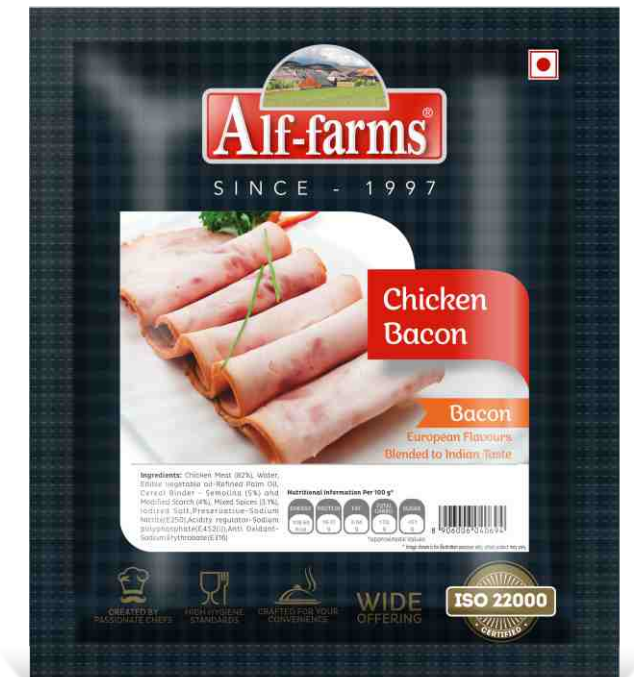
**Nutritional Information Per 100 g\***

ENERGY	PROTEIN	FAT	TOTAL CARBO.	SUGAR
199.14 Kcal	11.39 g	13.46 g	8.11 g	1.99 g

\*approximate Values



# Chicken Bacon



- 101mm x 21 mm
- 250 gms / 500gms
- 173mm x 198 mm

**Ingredients:** Chicken Meat (82%), Water, Edible vegetable oil-Refined Palm Oil, Cereal Binder - Semolina (5%) and Modified Starch (4%), Mixed Spices (3.1%), Iodized Salt,Preservative-Sodium Nitrite(E250),Acidity regulator-Sodium polyphosphate(E452(i)),Anti Oxidant-Sodium Erythroate(E316)

**Nutritional Information Per 100 g\***

ENERGY	PROTEIN	FAT	TOTAL CARBO.	SUGAR
108.68 Kcal	19.31 g	3.04 g	1.02 g	<0.1 g

\*approximate Values

### Chicken Barbeque Slices



- 101mm x 21 mm
- 250 gms / 500gms
- 173mm x 198 mm

**Ingredients:** Chicken Meat(82%), Water, Edible vegetable oil-Refined Palm Oil, Cereal Binder - Semolina (5%) and Modified Starch (4%), Mixed Spices (3.1%), Iodized Salt, Preservative - Sodium Nitrite(E250),Acidity regulator-Sodium polyphosphate(E452(i)),Anti Oxidant-Sodium Erythroate(E316)

**Nutritional Information Per 100 g\***

ENERGY	PROTEIN	FAT	TOTAL CARBO.	SUGAR
126 Kcal	20.1 g	5.1 g	0 g	<0.1 g

\*approximate Values



# Chicken

## KEBAB & TIKKA



### Chicken Seekh Kebab



- 101mm x 21 mm
- 250 gms / 500gms
- 173mm x 198 mm

**Ingredients:** Chicken Meat(75%), Water, Edible vegetable oil, Soya Granules (8%), Ginger, Garlic, Onion, Lemon Juice, Mixed Spices, Iodized Salt, Preservative-sodium nitrite, Erythroate, Acidity regulator - Triphosphate (E452(I))

Nutritional Information Per 100 g\*

ENERGY	PROTEIN	FAT	TOTAL CARBO.	SUGAR
217.54 Kcal	16.21 g	13.78 g	7.17 g	2.61 g

\*approximate Values

### Chicken Reshmi Tikka

- 101mm x 21 mm
- 250 gms / 500gms
- 173mm x 198 mm

**Ingredients:** Chicken Meat(75%), Curd, Water, Edible vegetable oil, Mixed Spices, Iodized salt.



Nutritional Information Per 100 g\*

ENERGY	PROTEIN	FAT	TOTAL CARBO.	SUGAR
191.99 Kcal	24.03 g	10.47 g	0.41 g	<0.1 g

\*approximate Values

### Chicken Desi Tikka



- 101mm x 21 mm
- 250 gms / 500gms
- 173mm x 198 mm

**Ingredients:** Chicken Meat (75%), Curd, Water, Edible vegetable oil, Mixed Spices, Iodized salt.

Nutritional Information Per 100 g\*

ENERGY	PROTEIN	FAT	TOTAL CARBO.	SUGAR
123.31 Kcal	17.38 g	5.39 g	1.32 g	<0.1 g

\*approximate Values

# Turkey

## Ham & Salami

### Turkey Ham with Olives



- 101mm x 21 mm
- 250 gms / 500gms
- 173mm x 198 mm

**Ingredients:** Turkey Meat(65%), Water, Edible vegetable oil-Refined Palm Oil, Cereal Binder - Semolina (5%) and Modified Starch (4%), Mixed Spices (3.1%), Iodized Salt,Olives,Preservative-Sodium Nitrite(E250),Acidity regulator-Sodium polyphosphate(E452(i)),Anti Oxidant-Sodium Erythroate(E316)

Nutritional Information Per 100 g\*

ENERGY	PROTEIN	FAT	TOTAL CARBO.	SUGAR
146.4 Kcal	15.24 g	8 g	3.36 g	<0.1 g

\*approximate Values

### Turkey Salami



- 101mm x 21 mm
- 250 gms / 500gms
- 173mm x 198 mm

**Ingredients:** Turkey Meat(65%), Water, Edible vegetable oil-Refined Palm Oil, Cereal Binder - Semolina (5%) and Modified Starch (4%), Mixed Spices (3.1%), Iodized Salt, Preservative-Sodium Nitrite(E250),Acidity regulator-Sodium polyphosphate(E452(i)),Anti Oxidant-Sodium Erythroate(E316)

Nutritional Information Per 100 g\*

ENERGY	PROTEIN	FAT	TOTAL CARBO.	SUGAR
178.37 Kcal	14.19 g	10.89 g	5.9 g	<0.1 g

\*approximate Values

### Pork Frankfurters Sausages



101mm x 21 mm

250 gms / 500gms

173mm x 198 mm

**Ingredients:** Pork Meat(63%), Water, Edible vegetable oil-Refined Palm Oil, Cereal Binder - Semolina (5%) and Modified Starch (4%), Mixed Spices (3.1%), Iodized Salt, Preservative-Sodium Nitrite(E250), Acidity regulator-Sodium polyphosphate(E452(i)), Anti Oxidant-Sodium Erythroate(E316)

Nutritional Information Per 100 g\*

ENERGY	PROTEIN	FAT	TOTAL CARBO.	SUGAR
157.64 Kcal	14.86 g	6 g	11.05 g	<0.1 g

\*approximate Values

### Dinner Franks - Pork Sausages

101mm x 21 mm

250 gms / 500gms

173mm x 198 mm



Nutritional Information Per 100 g\*

ENERGY	PROTEIN	FAT	TOTAL CARBO.	SUGAR
214 Kcal	14.8 g	13.9 g	7.6 g	<0.1 g

\*approximate Values

### Chorizo Sausages - Pork



101mm x 21 mm

250 gms / 500gms

173mm x 198 mm

**Ingredients:** Pork Meat (85%), Pork Fat (10%), Water, Mixed Spices (3.1%), Iodized Salt, Preservative-Sodium Nitrite (E250), Acidity regulator-Sodium polyphosphate (E452(I)), Anti Oxidant-Sodium Erythroate (E316)

Nutritional Information Per 100 g\*

ENERGY	PROTEIN	FAT	TOTAL CARBO.	SUGAR
312.03 Kcal	16.95 g	25.95 g	2.67 g	<0.1 g

\*approximate Values

### Pork Cocktail Sausages

101mm x 21 mm

250 gms / 500gms

173mm x 198 mm



**Ingredients:** Pork Meat(63%), Water, Edible vegetable oil-Refined Palm Oil, Cereal Binder - Semolina (5%) and Modified Starch (4%), Mixed Spices (3.1%), Iodized Salt, Preservative-Sodium Nitrite(E250), Acidity regulator-Sodium polyphosphate(E452(i)), Anti Oxidant-Sodium Erythroate(E316)

Nutritional Information Per 100 g\*

ENERGY	PROTEIN	FAT	TOTAL CARBO.	SUGAR
168.2 Kcal	11.56 g	7.44 g	13.75 g	<0.1 g

\*approximate Values

### Pork Oxford

101mm x 21 mm

250 gms / 500gms

173mm x 198 mm



**Ingredients:** Pork Meat(63%), Water, Edible vegetable oil-Refined Palm Oil, Cereal Binder - Semolina (5%) and Modified Starch (4%), Mixed Spices (3.1%), Iodized Salt, Preservative-Sodium Nitrite(E250), Acidity regulator-Sodium polyphosphate(E452(i)), Anti Oxidant-Sodium Erythroate(E316)

Nutritional Information Per 100 g\*

ENERGY	PROTEIN	FAT	TOTAL CARBO.	SUGAR
180.88 Kcal	11.65 g	12.8 g	4.77 g	<0.1 g

\*approximate Values

# Pork

## Salami

### Pork Ham Skinless



101mm x 21 mm

250 gms / 500gms

173mm x 198 mm

**Ingredients:** Pork Meat(82%), Water, Edible vegetable oil-Refined Palm Oil, Cereal Binder - Semolina (5%) and Modified Starch (4%), Mixed Spices (3.1%), Iodized Salt, Preservative-Sodium Nitrite(E250), Acidity regulator-Sodium polyphosphate(E452(i)), Anti Oxidant-Sodium Erythrobate(E316)

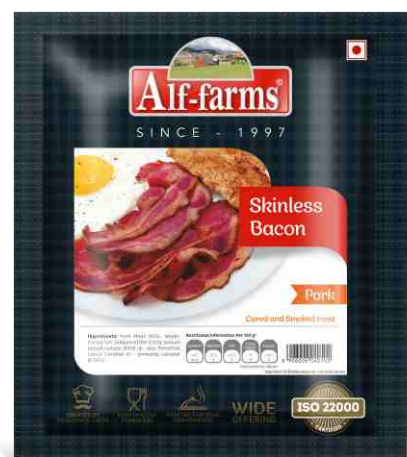
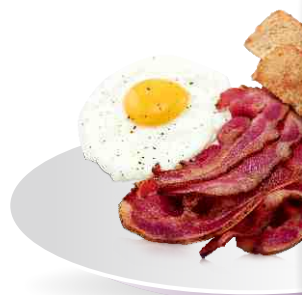
Nutritional Information Per 100 g\*

ENERGY	PROTEIN	FAT	TOTAL CARBO.	SUGAR
86.55 Kcal	16.1 g	1.27 g	2.68 g	<0.1 g

\*approximate Values

### Pork Skinless Bacon

101mm x 21 mm  
250 gms / 500gms  
173mm x 198 mm



Nutritional Information Per 100 g\*

ENERGY	PROTEIN	FAT	TOTAL CARBO.	SUGAR
421 Kcal	12.5 g	41.2 g	0 g	<0.1 g

\*approximate Values

# Pork

## Salami

### Pork Peppronni



101mm x 21 mm  
250 gms / 500gms  
173mm x 198 mm

**Ingredients:** Pork Meat (62%), Pork Fat(15%), Mixed Spice(7%), Water, Preservative-Sodium Nitrite(E250)

Nutritional Information Per 100 g\*

ENERGY	PROTEIN	FAT	TOTAL CARBO.	SUGAR
352.49 Kcal	16.39 g	27.33 g	10.24 g	<0.1 g

\*approximate Values

### Pork Salami



101mm x 21 mm  
250 gms / 500gms  
173mm x 198 mm

**Ingredients:** Pork Meat(63%), Water, Edible vegetable oil-Refined Palm Oil, Cereal Binder - Semolina (5%) and Modified Starch (4%), Mixed Spices (3.1%), Iodized Salt, Preservative-Sodium Nitrite(E250), Acidity regulator-Sodium polyphosphate(E452(i)), Anti Oxidant-Sodium Erythrobate(E316)

Nutritional Information Per 100 g\*

ENERGY	PROTEIN	FAT	TOTAL CARBO.	SUGAR
165.57 Kcal	13.46 g	10.77 g	3.7 g	<0.1 g

\*approximate Values